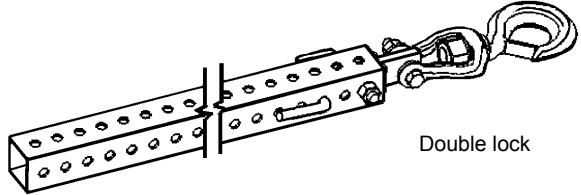
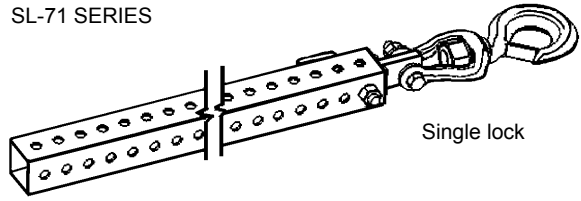


**STEMS**

SL-71 SERIES



\* Safety Swivel Hook Connector not included in price of stem.

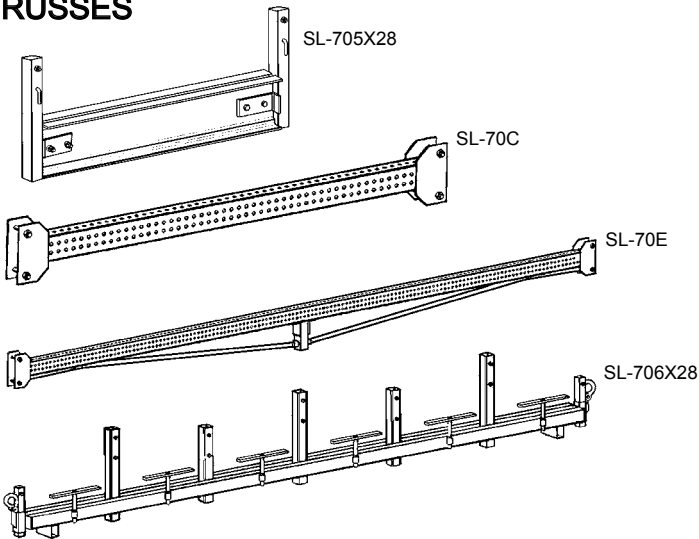
**VERTICAL STEMS - Single lock (1000 lb. Cap.)**

MODEL	LENGTH	SIZES	WT
SL-71A32	32"	1 3/4" Sq.	7
SL-71A48	48"	1 3/4" Sq	9
SL-71A60	60"	1 3/4" Sq	11
SL-71A72	72"	1 3/4" Sq	13
SL-71C48	48"	2" Sq.	10
SL-71C60	60"	2" Sq.	12
SL-71C72	72"	2" Sq.	14
SL-71C96	96"	2" Sq.	16

**VERTICAL STEMS - Double lock (2000 lb. Cap.)**

SL-71AA48	48"	1 3/4" Sq	10
SL-71AA60	60"	1 3/4" Sq	12
SL-71AA72	72"	1 3/4" Sq	14
SL-71CC48	48"	2" Sq.	11
SL-71CC60	60"	2" Sq.	13
SL-71CC72	72"	2" Sq.	15
SL-71CC96	96"	2" Sq.	17

**TRUSSES**



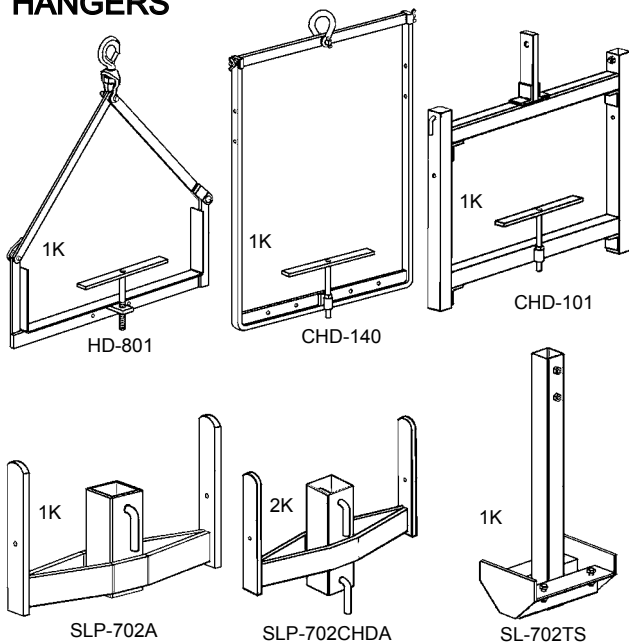
**TRUSS - MODEL SL-70 WITH BOLT LOCKS**

MODEL	LENGTH	DEPTH	WT
SL-70C	30"	2" X 3"	18
SL-70B	48"	2" X 3"	23
SL-70A	72"	2" X 3"	29
SL-70D	96"	2" X 3"	35
SL-70E	144"	2" X 3"	63

**HEAVY DUTY TRUSS - INCLUDES BOARD LOCKS 2k Cap.**

MODEL	WIDTH OF DECK	NO. OF STAGES	WT
SL-706X28	14.5'	6/28" w	141
SL-705X28	10'	5/28" w	50

**HANGERS**



**HANGER MODELS FOR STAGES**

MODEL	BASE WIDTH	HEIGHT	RATED LOAD	WT
HD-801	28.5"	28"	1000 Lbs.	16
CHD-140	28.5"	24" - 36"	1000 Lbs.	30
CHD-101	28.5"	24" - 52"	1000 Lbs.	31

**HANGER MODELS FOR NEEDLE BEAMS... (USED WITH 1 3/4" SQ VERTICAL STEMS)**

SLP-702A	4.25"	(NEEDLE BEAMS)	1000 Lbs.	6
SLP-702CHDA	4.25"	(NEEDLE BEAMS)	2000 Lbs.	7

**HANGER MODELS FOR NEEDLE BEAMS... (USED WITH 2" SQ VERTICAL STEMS)**

SLP-702C	4.25"	(NEEDLE BEAMS)	1000 Lbs.	9
SLP-702CHDC	4.25"	(NEEDLE BEAMS)	2000 Lbs.	12

**HANGER MODELS FOR ALUM STRONGBACKS (USED WITH 1 3/4" SQ VERT. STEMS)**

SLP-702TS	4 1/2"	(STRONGBACKS)	1000 Lbs.	15
-----------	--------	---------------	-----------	----

**HANGER MODELS FOR ALUM STRONGBACKS (USED WITH 2" SQ VERT. STEMS)**

SLP-702TSB	4 1/2"	(STRONGBACKS)	2000 Lbs.	18
------------	--------	---------------	-----------	----

## BY-PASS SCAFFOLD ASSEMBLIES

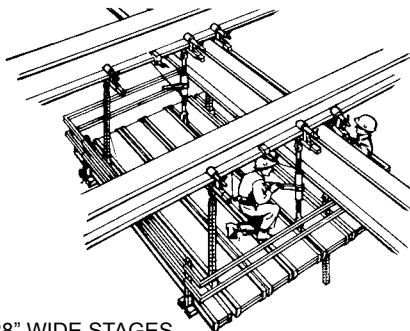
The By-Pass System is part of a revolutionary concept in scaffold engineering. Instead of using ground scaffolding, working decks are elevated by using clamp and hanger assemblies suspended from existing structural beams. This allows general contractors, painters, and maintenance crews to perform jobs over water, utility lines, highways, rugged terrains, and railroads without interrupting traffic and work operations below. Because suspended scaffolding requires few materials, no special tools and minimal labor to erect and assemble, savings of 50% or more are reported over conventional ground scaffolding.

The By-Pass System is designed to simplify the moving of the

suspended working decks along the support beams. *The suspended scaffold can be moved the entire length of the beam, by-passing cross beams without removing or leaving the working deck.*

This is accomplished by attaching ratchet binders and stems (complete with roller beam clamps) to the I-beam flange. The scaffold roller beam clamp and stem assembly which supports the working deck, is then lowered and the deck is rolled beyond the cross beam. Once repositioned, the scaffold clamp and stem assembly are reclamped and locked to the beam flange. The ratchet binder and stem are lowered, and work can resume with minimum downtime.

### SLP-706

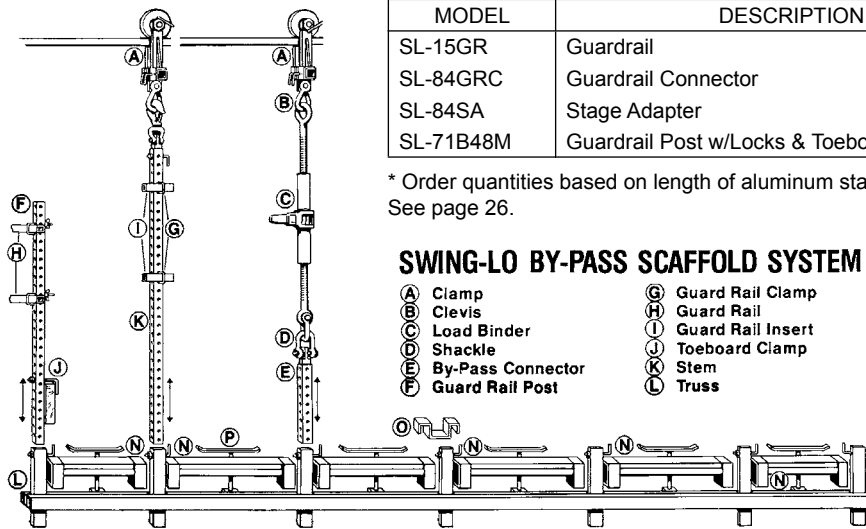


6 ALUMINUM 28" WIDE STAGES

SLP-706 BY-PASS SCAFFOLD ASSEMBLY			
MODEL	DESCRIPTION	WT	QTY
SL-54F2	Roller Beam Clamp w/Brakes, 2000# cap.	29	6
SL-54F2BP	2k Cap. By-Pass Clamp w/ratchet connector	35	2
SL-65CHD	2k Cap. Safety Connector	6	6
SL-71CC60	2k. Cap. 5 ft. Vertical Stem	11	6
SL-706X28	HD Truss w/slots [for (6 ea.) 28" wide stages]	146	2
CM-10	Ratchet Load Binder, 16" Take-up	16	2

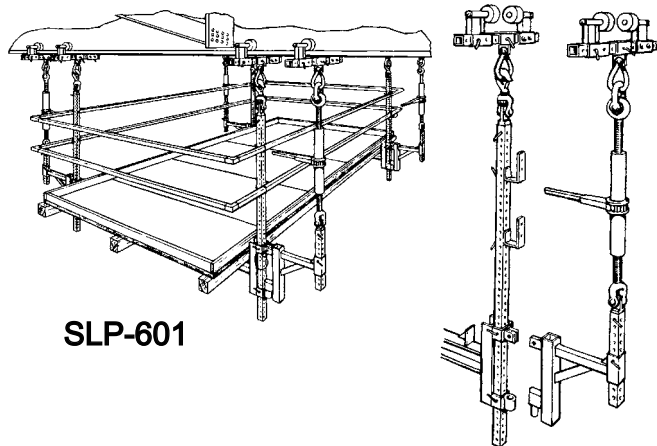
GUARDRAILS & POST ACCESSORIES			
MODEL	DESCRIPTION	WT	QTY
SL-15GR	Guardrail	.50/ft.	*
SL-84GRC	Guardrail Connector	1	*
SL-84SA	Stage Adapter	3	*
SL-71B48M	Guardrail Post w/Locks & Toeboard Clamps	9	*

\* Order quantities based on length of aluminum stages and width of total working deck. See page 26.



### SWING-LO BY-PASS SCAFFOLD SYSTEM SIMPLIFIES SET UP

- A Clamp
- B Clevis
- C Load Binder
- D Shackle
- E By-Pass Connector
- F Guard Rail Post
- G Guard Rail Clamp
- H Guard Rail
- I Guard Rail Insert
- J Toeboard Clamp
- K Stem
- L Truss
- N 2" Stage Board
- O Spacer Cap
- P Scaffold Board Lock
- Q Safety Connector



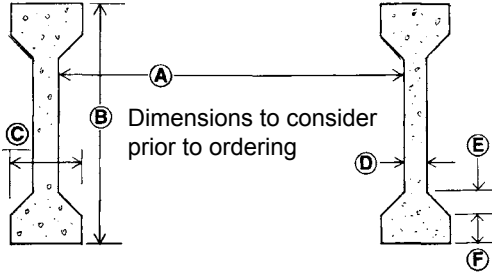
SLP-601

### MINI BY-PASS SCAFFOLD ASSEMBLY

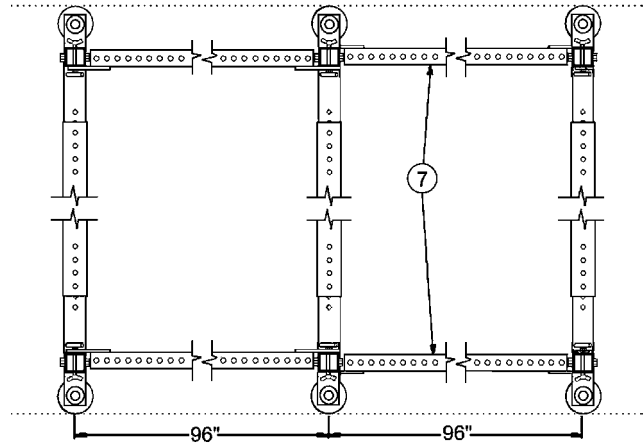
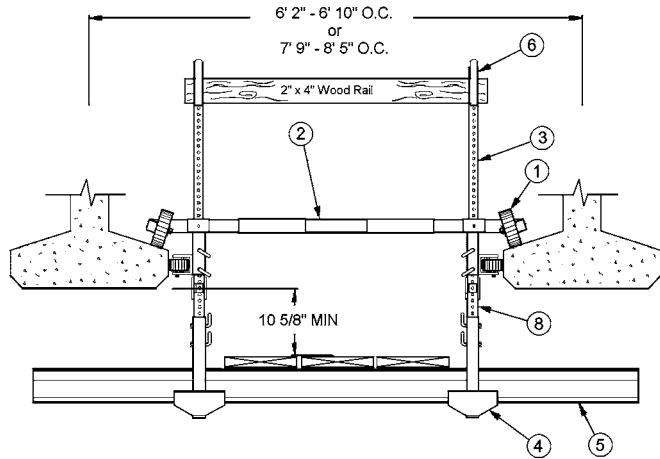
The SLP-601 Mini By-Pass Scaffold System is a mobile platform equipped with four suspension points and two transfer points. The Vertical Stems come with triangular By-Pass Brackets that allow for going around Diaphragms, Stiffeners, and Lateral Braces. The standard packaged platform is four feet wide by the desired length of the platform. However, there are other widths available. See page 6 for other platform widths. The aluminum deck and guardrails are not included. See page 26 for guardrails and accessories.

SLP-601 BY-PASS SCAFFOLD ASSEMBLY			
MODEL	DESCRIPTION	WT	QTY
SL-54F	Roller Beam Clamp 6" - 18" Beam	76	4
SL-54FBP	By-Pass Roller Beam Clamp 6-18"	80	2
SL-65C	Safety Swivel Hook Connector	14	4
SL-71A72	6 ft. Galvanized Vertical Stem	50	4
SL-70B	4 ft. Truss	46	2
CM-10	Ratchet Load Binder, 16" Take-up	31	2
SL-65BPC	By-Pass Connector w/23" insert	100	4

### MOBILE STRIPPING SCAFFOLD

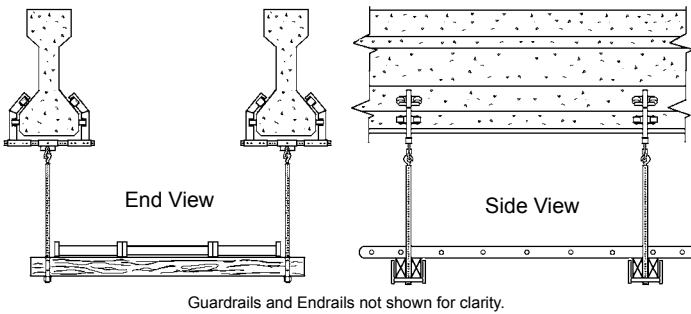


Swing-Lo Mobile Stripping Scaffold is designed to roll along prestressed concrete beam flanges. Adjustable expansion bars expand from beam to beam with the wheel assemblies attached at both ends. The Scaffold is equipped with side rollers and brakes to help maintain scaffold stability and mobility. The working deck is adjustable horizontally as well as vertically to adapt to beam spacing. When fully assembled the scaffold measures from 6 feet to over 10 feet wide and 16 feet long.

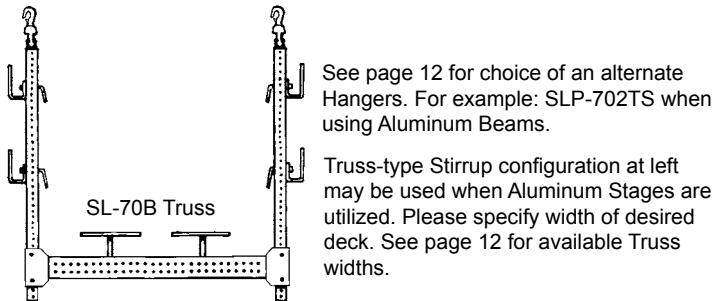


ROLLING BEAM CLAMP SERIES			
#	MODEL	DESCRIPTION	QTY.
1	PSC72AN	Prestressed Beam Cart Jaw Assembly	6
2	PSCB53	Expansion Bar 31"	3
2	PSCB72	Expansion Bar 50"	3
3	PSCG24	Cart Scaffold Guardrail Bracket	4
4	SLP-702TS	Truss Hanger Support for 1 3/4" Stem	6
5	SL-HLT55008	5 1/2" x 8' Alum Beam w/Wood Nailers	3
6	SL-35C	Safety Rail Bracket (for 2x4 wood rail)	4
7	15AB096F	Horizontal Brace 96"	4
8	SL-71A024M	1 3/4" Sq. x 24" Vertical Stem	6

### PRESTRESSED BEAM ROLLER CLAMP ASSEMBLY



ROLLING PRESTRESSED BEAM CLAMP ASSEMBLY				
MODEL	DESCRIPTION	QTY	WT	
SL-74R45A	2000 lb. Cap., 14"-28" exp., 45 deg., Rolling Prestressed Beam Clamp.	4	260	
SL-65CHD	2000 lb. Cap., 360 degree, Safety Swivel Hook Connector.	4	24	
SL-71AA48	1.75" Sq. x 4", 2000lb. Cap., Double Locked Vertical Perforated Stem.	4	36	
SLP-702CHDA	2000 lb. Cap. Hanger for wood beams.	4	24	
SL-35C	Safety Rail Bracket (for 2" x 4" top, mid, and end rails)	16	32	



See page 12 for choice of an alternate Hangers. For example: SLP-702TS when using Aluminum Beams.  
Truss-type Stirrup configuration at left may be used when Aluminum Stages are utilized. Please specify width of desired deck. See page 12 for available Truss widths.

The Prestressed Beam Clamp System is ideal for installing and removing concrete forms. It is a fully adjustable platform along the Vertical Stem. When fully assembled, it provides a mobile platform that can be expanded to include By-Pass attachments when diaphragms are present. The platform can be enlarged to include several bays.

**NOTE:** See page 11+ for various Prestressed Beam Clamp