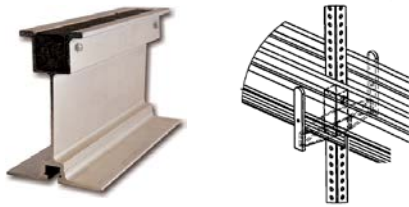


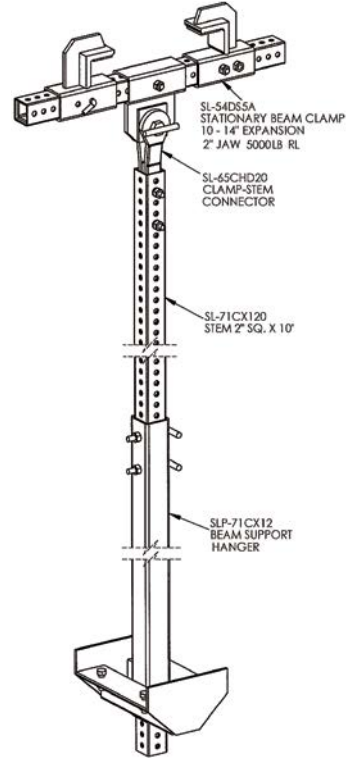
grid scaffold

When a large area suspended work platform is required for over-head construction or maintenance, Swing-Lo beam clamp, stem, and hanger assemblies have proven to be a safe and economical solution. This grid and modular system can be expanded to any size platform. Rated live load can range from twenty-five pounds per square foot to fifty or more pounds per square foot.

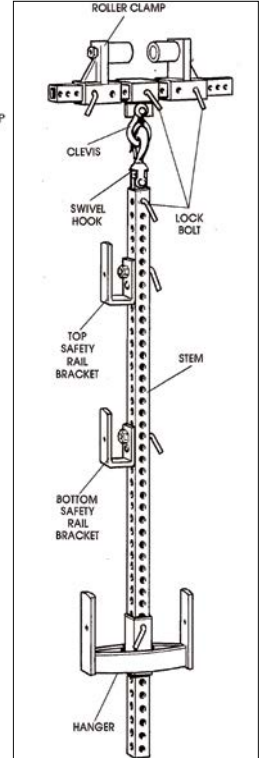


Pages 51-52 for beam clamp choices
 Pages 53-55 for stem and hanger choices
 Page 56 for Aluminum Beams & Scaffold Plank

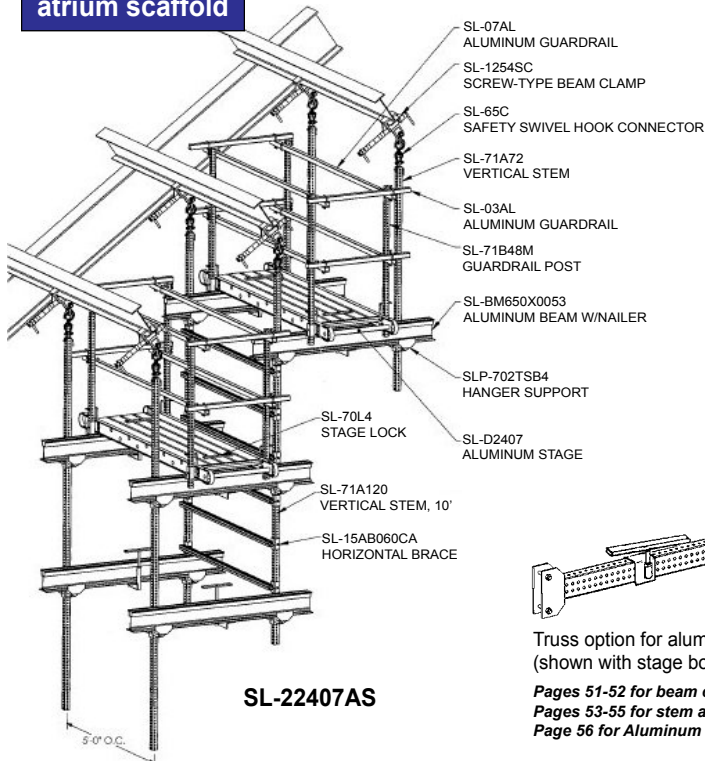
5000 lb SWL Assembly



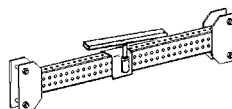
1000 lb SWL Assembly



atrium scaffold



SL-22407AS

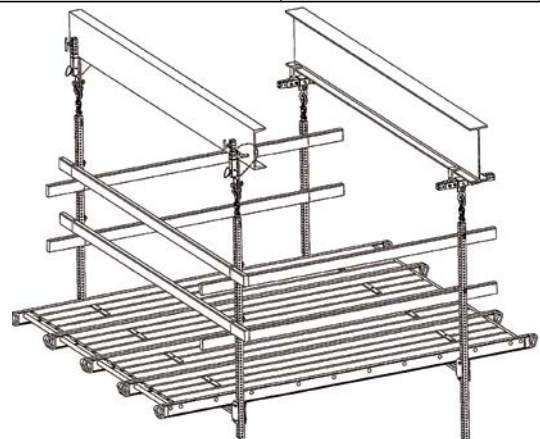


Truss option for aluminum stage (shown with stage board lock)

Pages 51-52 for beam clamp choices
 Pages 53-55 for stem and hanger choices
 Page 56 for Aluminum Beams & Scaffold Plank

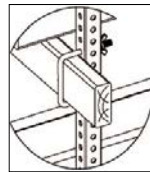
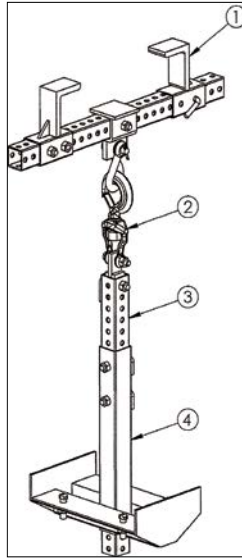
The atrium scaffold provides a flexible, multi-level suspended scaffold for sloped I-beams. Expand the system by adding components for additional levels. Each level is rated at five hundred pounds.

Atrium Scaffold	SL-22407AS
Scaffold Packaged weight (lbs): 567	SWL (lbs): 500/elevation distributed load
Scaffold Size (ft): 2 X 7 (3 ea.)	



girder clamp & hanger scaffold

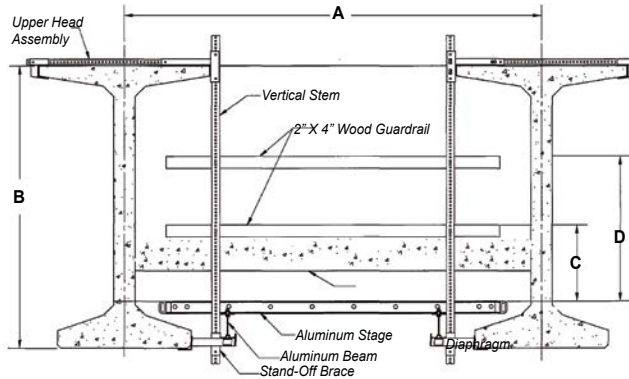
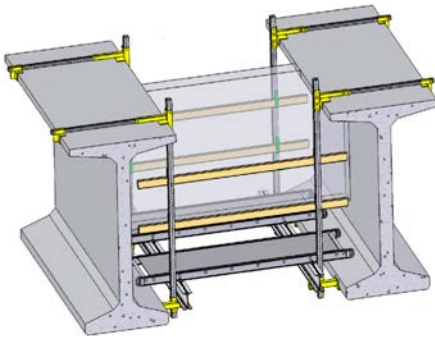
This stationary system uses aluminum beams or scaffold grade wood to support the working deck. 3/4" plywood is used to finish the deck. Swing-Lo technicians will help in configuring your suspended scaffold requirements based on platform size and load.



stationary suspended scaffold		
	DESCRIPTION	CAT. PAGE
1	girder clamp	51-52
2	safety swivel hook connector	53
3	vertical perforated stem	53
4	hanger	55
5	safety rail bolt lock	58

concrete girder drop thru scaffold

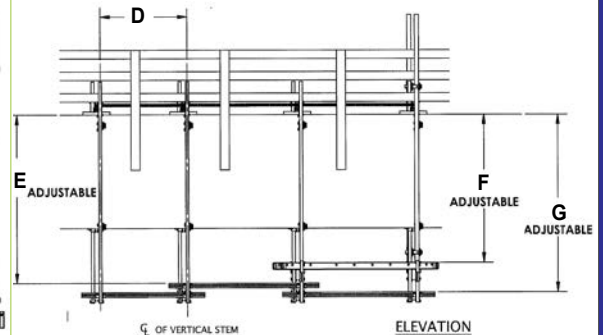
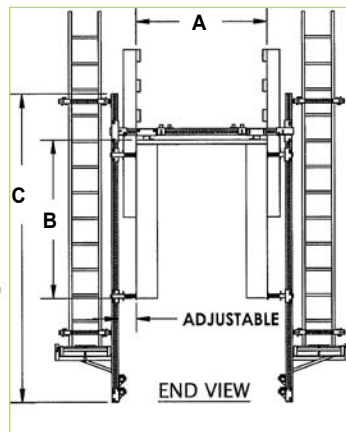
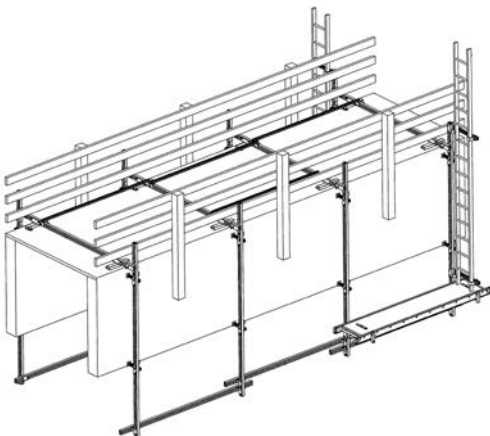
This system provides a fast and safe method of accessing the interior portions of the bridge. It can be configured to any length. Specify the dimensions requested below, and our technicians will configure the platform for you. Rolling? **Page 17**



Concrete Girder Drop-Thru Scaffold	
Scaffold Packaged weight (lbs): 411	SWL (lbs): 750 distributed load
Scaffold Size (ft): 4 - 5 X 10-12	

pedestrian bridge scaffold

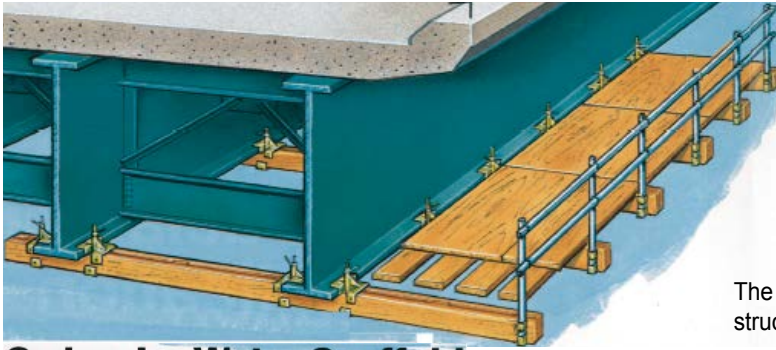
Easy set-up and dismantling. The Pedestrian Bridge Scaffold provides access to all sides of the bridge with up to three workers per side.



Pedestrian Bridge Scaffold	
Weight (lbs): 733	SWL (lbs): 750/side distributed load
Scaffold Size (ft): 8 X 24	

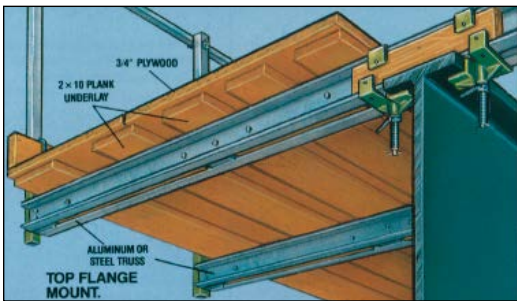


waler girder scaffold



Waler girder clamps, when used in pairs, provide an effective and efficient scaffold. The Walers are used with 2" x 6", 8", 10", or 12" wood beams. Aluminum Channel Trusses (two 2" x 6" spaced back-to-back) or two Steel Channel Trusses are similarly attached to create a cantilevered scaffold.

Swing-Lo Waler Scaffold for faster forming and stripping!



FB-C6S Weight (lbs): 35 each

Safe Working Load Specifications:

The Waler Girder Clamp is designed to support a pair of structural members as a cantilever.

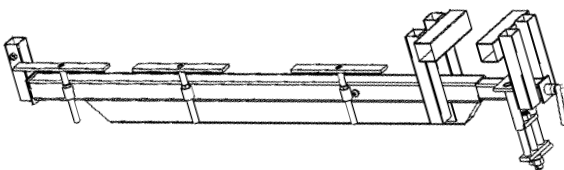
Determination of the decking support should be performed by a Licensed Engineer. The choice of structural members must consider the following:

1. Safety Factor of 4 based on desired distributed live load.
2. End point concentrated load not more than 500 pounds with a minimum safety factor of 4.
3. Maximum deflection when fully loaded.

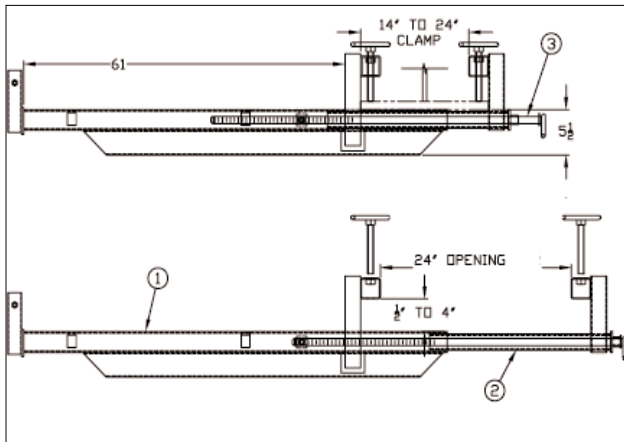
Total load shall not exceed Waler Girder Clamp's rated load/safe working load of 2000 lbs, based on the square area of the support members.

Total load shall not exceed Waler rated load of 2000 lbs, based on the square area of the support members.

waler fascia girder scaffold



SL-05FBW



The Waler Bracket is used as a temporary catwalk support. The system provides a solid base for aluminum stages or planking and plywood decks. The Waler assembly includes guardrail post. See example below for obtaining proper spacing of the Waler Brackets.

Waler Fascia Girder Bracket			
MODEL	SIZE (ft)	GIRDER WIDTH (inches)	GIRDER THICKNESS (inches)
SL-03FBWA	3	8 - 18	3/4 - 4
SL-03FBWB	3	14 - 24	3/4 - 4
SL-04FBWA	4	8 - 18	3/4 - 4
SL-04FBWB	4	14 - 24	3/4 - 4
SL-05FBWA	5	8 - 18	3/4 - 4
SL-05FBWB	5	14 - 24	3/4 - 4

Safe Working Load Limits:

All Waler Fascia Beam Brackets are designed to support 250 lbs per foot with a safety factor of 4. Spacing and working loads are determined as follow:

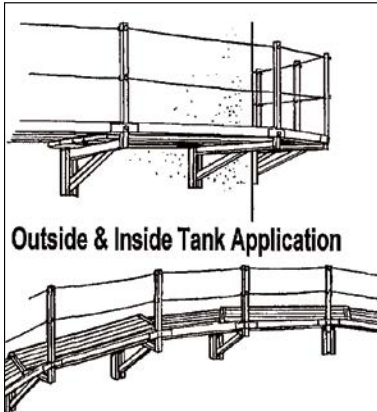
EX: 4 ft. Waler Bracket = 4ft. X 250 Lbs. = 1000 lbs.

1000 lbs divided by desired working load of 25 lbs/sq./ft =

$$\frac{1000 \text{ lbs.}}{25 \text{ lbs./sq./ft.}} = 40 \text{ sq. ft.} = \frac{40 \text{ sq. ft.}}{4 \text{ ft. Bracket}} = 10 \text{ ft. spacing}$$

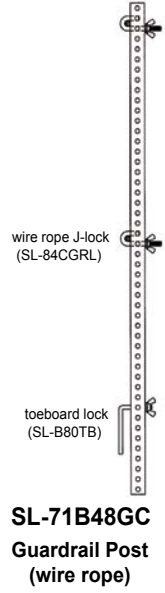
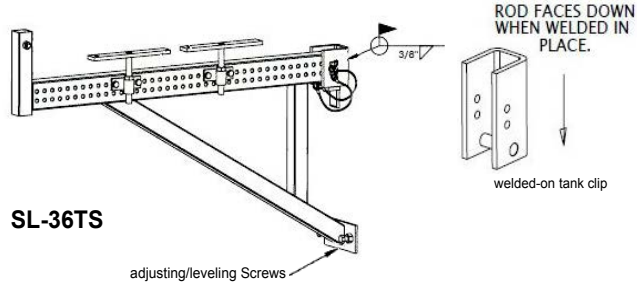
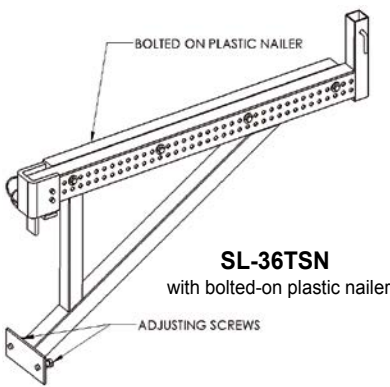


tank scaffold (stationary)



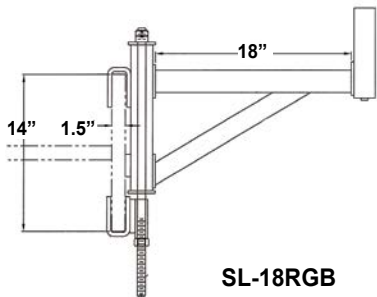
The Tank Bracket Scaffold Assembly is designed to be used with one clip (carbon steel or stainless steel) welded on the inside or outside of the tank surface. The Tank Bracket also includes Board Locks to be used with Scaffold Planks or Aluminum Stages. Models with an **(N) extension** include a nylon base attachment for screwing on wood scaffold planks. Perforated pre-galvanized guardrail post facilitates wire rope guardrails. The Tank Bracket comes in three sizes.

Tank Scaffold 750 lbs point load; 1000 lbs uniform load		
Model	Description	Wt (lbs)
SL-24TS	2 ft. Bracket w/1 Locking Clip	31
SL-36TS	3 ft. Bracket w/1 Locking Clip	46
SL-48TS	4 ft. Bracket w/1 Locking Clip	58
SL-18RGB	1.5 ft. Bracket for Ring Girder	28
SL-71B48GC	4 ft. Perforated Guardrail Post PG	8



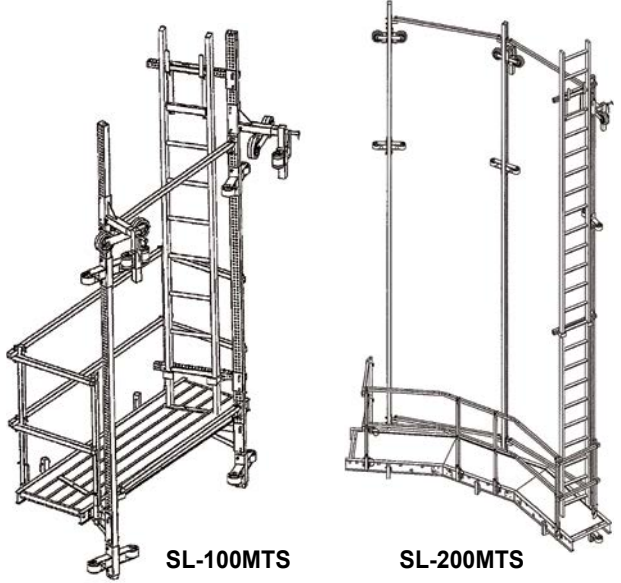
tank scaffold (ring girder)

The Tank Bracket for Ring Girder is used where a steel ribbon is welded to the circumference of a steel tank, providing a stable platform for the worker. The bracket is adjustable for various sizes in width and height.



- Figuring the number of Tank Brackets needed:**
- 1) Multiply the diameter of the tank by 3.14
 - 2) Divide the result by 8
 - 3) Add 1 Tank Bracket to
 - 4) Obtain total Tank Brackets needed

tank scaffold (rolling)



A rolling platform on the inside or outside of a tank wall is provided. The platform can be adjusted along the vertical stem. The scaffold comes complete with aluminum stage deck and guardrails. The ladder clamp can accommodate any standard ladder (not included in the package). The rolling Tank Scaffold is ideal for cleaning, re-lining, and re-surfacing steel or concrete tanks.

Tank Scaffold (rolling)				
Model	Stem Length (ft)	Width (in)	Scaffold Length (ft)	SWL (lbs)
SL-100MTS	to 24	24/28	7 OR 12	500
SL-200MTS	VARIABLES	VARIABLES	MODULAR	750

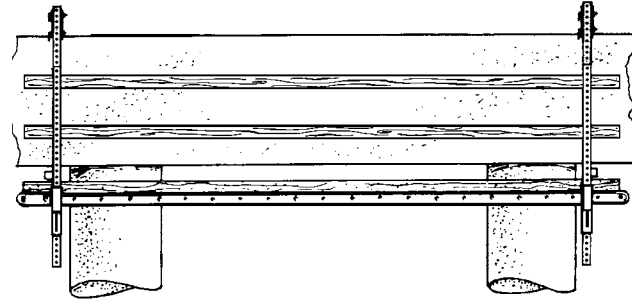
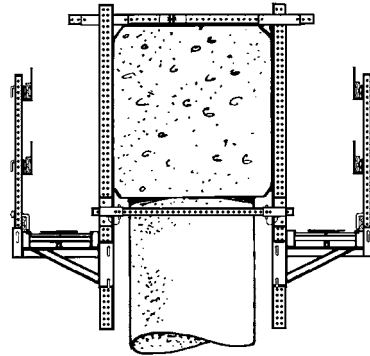


pier cap scaffold

The Pier Cap Scaffold is designed to straddle pier caps at two points or more. Access is provided to all sides of the pier.



SL-20PSE



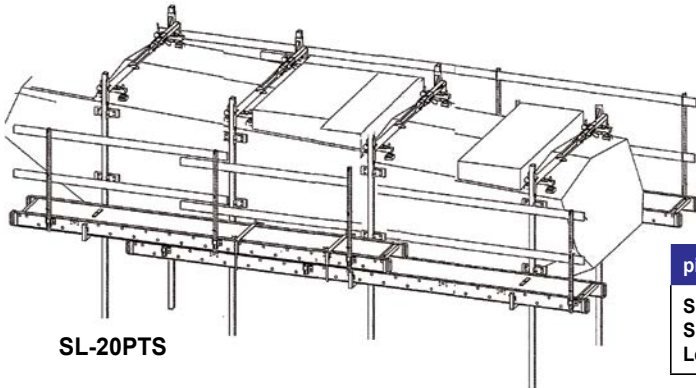
FEATURES:

- * Adjusts from 24" - 48"
- * 8 ft. Vertical Stem
- * 2 ft. wide platform
- * 500 lbs SWL/side; simple span

pie cap Scaffold (saddle style)	SL-20PSE (2 ft. - 4 ft. expansion)
Scaffold Packaged weight (lbs): 346	SWL (lbs): 500/scaffold distributed load
Scaffold Size (ft): 2 X to 32	
Length of Vertical Stem (ft): 8	

pier cap scaffold

The SL-20PTS Pier Scaffold is designed to straddle pier caps at two points or more. Access to all sides is available. Working decks are adjustable for width and length. This model adapts to slopes of eighty-five degrees on the pier cap. The length of the Platform can be increased using the SL-49B Stage Binder to connect and lengthen the aluminum stages.



SL-20PTS

pie cap Scaffold (saddle style)	SL-20PTS (6 ft. - 8.50 ft. expansion)
Scaffold Packaged weight (lbs): 346	SWL (lbs): 750/scaffold distributed load
Scaffold Size (ft): 2 X to 32	
Length of Vertical Stem (ft): 12	

heavy duty pier scaffold

The Heavy Duty Pier Cap Scaffold is designed for Pier/Pier Cap/Pier Column repairs. The system may be configured in a single or double elevation, and maybe fully enclosed, providing a safe and comfortable work environment. The spacing and number of hangers are based on the load requirements.

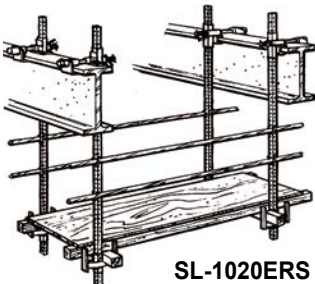


SL-30PSS

Heavy Duty Pier Cap Scaffold SL-30PSS		
	DESCRIPTION	CAT. PAGE
1	girder clamp	51-52
2	safety swivel hook connector	53
3	vertical perforated stem	53
4	hanger & truss	54-55
5	safety rail bolt lock	58
6	decking, guardrails & accessories	56-58

elevated rail scaffold

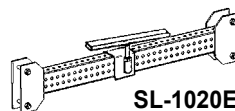
Clamp onto the top flange of bridge girders and create a working deck. An alternate configuration available using aluminum stage. Specify width of desired platform.



SL-1020ERS

Option with hanger for 4" X 6" wood support and plywood decking or aluminum stage.

Elevated Rail Scaffold	SL-1020ERS/SL-1020ERST
Scaffold Packaged weight (lbs): 138	SWL (lbs): 500 distributed load
Scaffold Size (ft): 8 X 8	
Length of Vertical Stem (ft): 6	

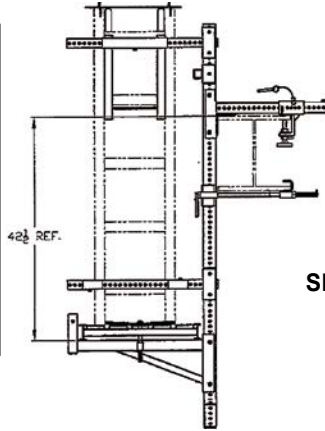


SL-1020ERST

Truss option for aluminum stage (shown with stage board lock)



single side girder scaffold



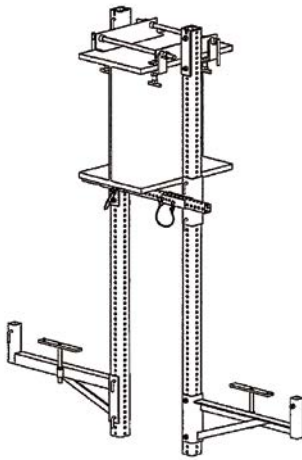
The Single-Side Beam Scaffold is easily placed and removed where it is needed. It is used for splicing and bolting girder sections. Guardrails provided when requested. The platform deck is adjustable along the vertical stem. Optional Wheels on the base of the Vertical Stems allow the platform to be erected below and rolled into place.

SL-1015B1

Single Side Girder Scaffold	SL-1015B1
Girder Size (in): 6 - 18 Scaffold Packaged weight (lbs): 226 Scaffold Size (ft): 2 X 7/12 Vertical Stem Size (ft): 2.50 X 8 Side-Mounted Ladder Clamp	SWL (lbs): 500 distributed load

* Ladder not included

saddle scaffold



SL-20PSG

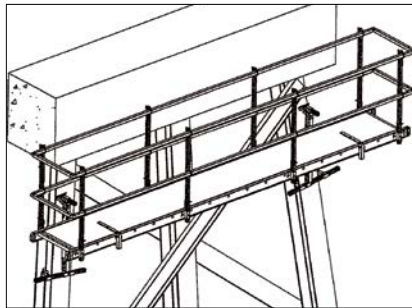
The Fixed Beam Saddle Scaffold provides access to both sides of the girder. The deck is adjustable along the length of the vertical stem. A simple span platform ranges from seven feet to thirty-two feet. Specify the length of the aluminum stage (quoted separately) to be used.

Saddle Scaffold	SL-20PSG
Girder Size (in): 8 - 24 Scaffold Packaged weight (lbs): 405 Scaffold Size (ft): 2 X 7 or 2 X 12 Vertical Stem Size (ft): 2.50 X 8 Side-Mounted Ladder Clamp	SWL (lbs): 500/side distributed load

* Ladder not included

pile scaffold (steel)

This assembly clamps onto the steel girder piles, providing a work platform. Configured specifically to the needs of the user, the width (24", 28") and length (up to 40 ft.) are specified, including the Safe Working Load (500 lbs or 750 lbs).

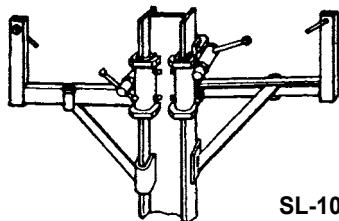


Pile Scaffold (steel) SL-4618PSS			
Model	Description	Wt (lbs)	SWL (lbs)*
SL-3618PSS	Pile Bracket - 36"	41	750
SL-4818PSS	Pile Bracket - 48"	55	750

*sold in pairs; (SWL simple span)

SL-4618PSS

girder column scaffold



SL-100CC

The Girder Column Scaffold comprises four Column Clamps, and when properly erected, supports fourteen-inch wide aluminum stages, up to forty feet long on each side of the column. No tools required.

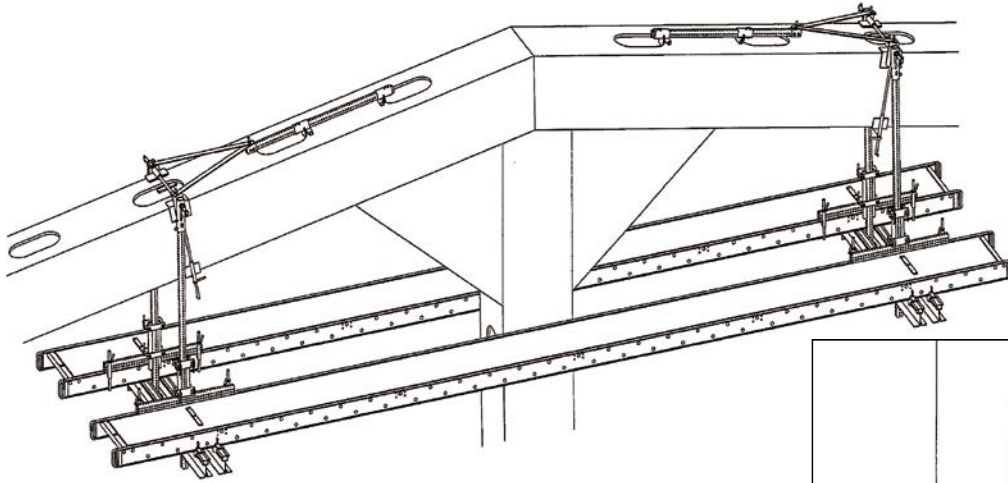
Girder Column Scaffold			
Model	Size (in)	Wt (lbs)	SWL (lbs)
SL-100CC	6 - 10	20	500
SL-160CC	12 - 16	35	500

*sold in pairs; (SWL simple span)



box chord scaffold

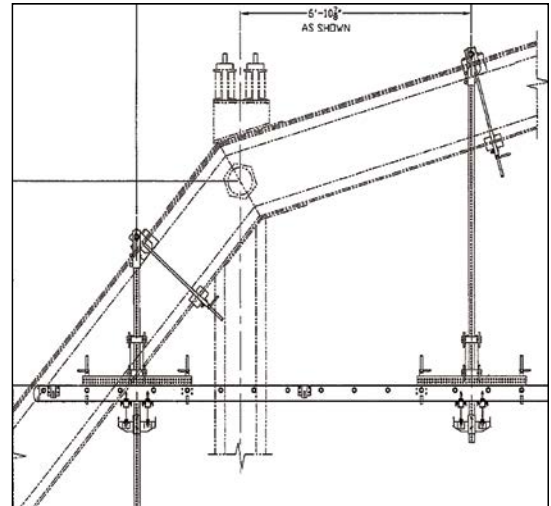
The Swing-Lo Box Chord Scaffold Model SL-54BCC10 is designed to lock onto bridge box chords, providing two suspended platforms (twenty-four or twenty-eight inch wide) and up to forty feet in length. Stabilizers limit swaying. Safe Working Loads of 500 or 750 pounds available. Increase the Safe Working Load by adding more deck supports.



When considering the suspended scaffolding, please include the following: 1) width of the platform needed, 2) length of the platform needed, 3) height from the top of the platform to the bottom of the chord, 4) load requirement, and 5) number of platforms needed. Also, please specify the chord type and chord dimensions, including width and depth.

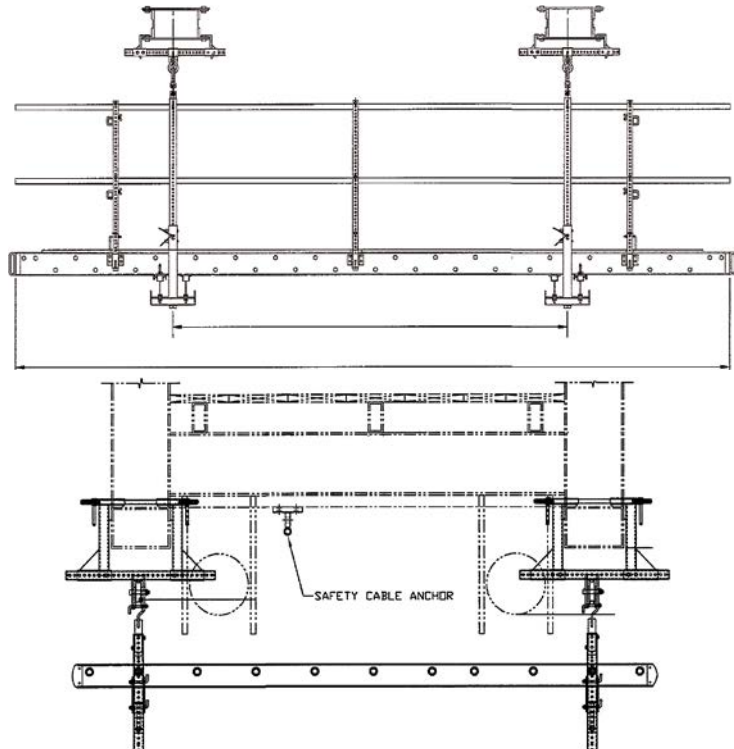
Box Chord Scaffold	SL-54BCC10
Chord Size (in): 12 - 36	SWL (lbs): 750/side distributed load
Scaffold Packaged weight (lbs): 535	
Scaffold Size (ft): 2 X to 32	
Vertical Stem Size (ft): 2.50 X 8	

SL-54BCC10



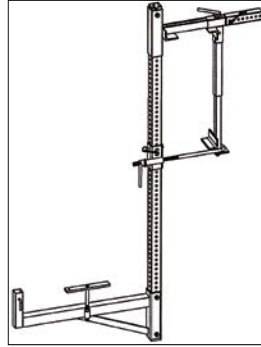
box chord scaffold

The Box Chord Scaffold comes in a variety of configurations designed to provide a safe and secure suspended scaffolding system to any and all sides of the chord.

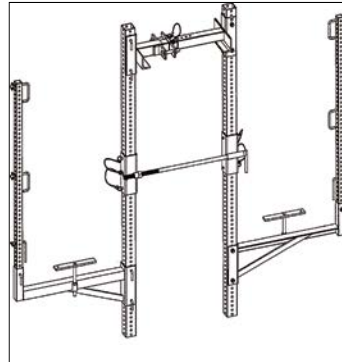


box chord scaffold

Standard Chord access includes Single Side, Double Side, and All Sides access. Add more stirrups to expand the scaffold length.

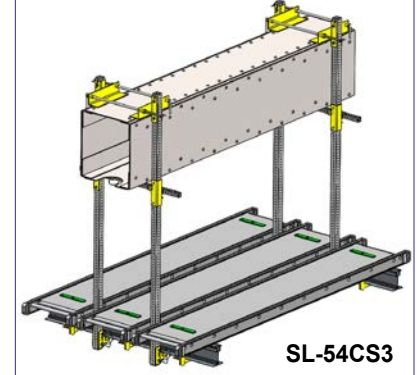


SL-54CS1



SL-54CS2

All Access Box Chord includes the middle/center area



SL-54CS3

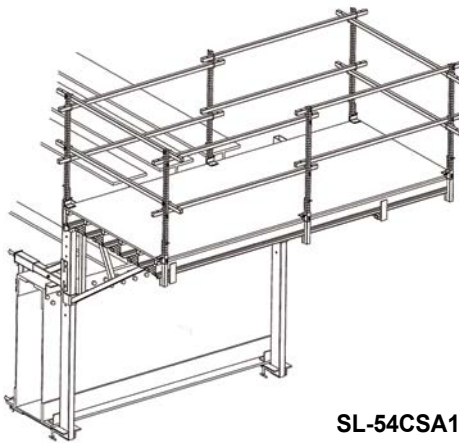
If access to the center platform/scaffold **only** is required, decrease the length of the aluminum beam, and request only one aluminum stage; the model number would then change to **SL-54CS3A**

Box Chord Scaffold		Wt	SWL/side
Model	Description	(lbs)	(lbs)
SL-54CS1S	Single-Side	160	500
SL-54CS2S	Double-Side	322	500
SL-54CS3S	All-Access	367	500

Guardrails and Toeboards not shown for clarity

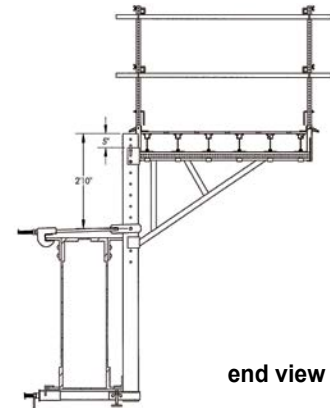
box chord cantilever scaffold

Box Chord Cantilever Scaffold offers access without limiting the size of the working platform. No tools are needed to erect this adjustable and modular platform. The deck may be expanded up to seven feet wide, and up to the desired length; simply include additional components.



SL-54CSA1

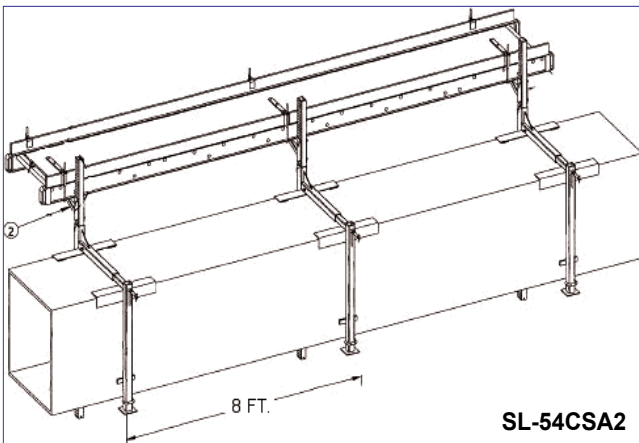
Box Chord Scaffold			
Model	Size (ft)	Wt (lbs)	SWL (lbs)
SL-54CSA1	66 X 12.50	349	750



end view

box chord cantilever scaffold

Build a cantilever catwalk scaffold along a box chord. The scaffold is adjustable on the vertical stem, above or below the box chord.



SL-54CSA2

SL-54BCSA2 Box Chord Scaffold		
Model	Description	Wt (lbs)
SL-54CC36	Box Chord Clamp	102
SL-7008	96" Stems	32
SL-28SBR	28" Stage Bracket	18
SL-080TB	Reg. Toeboard Clamp	1
SL-70L	Board Locks	9
WT: 162 lbs per Bracket		SWL (lbs): 750

